



LU1600A050 Fiber Coupler



Description:

Fiber to fiber coupler for easy fiber extension with a fiber patch cord. A broken fiber on a robot arm for example can be easily exchanged. A contaminated patch cord in a medical application can be exchanged by the operator.

Due to the broad wavelength range and wide power levels (including pulsed applications), the robust design of this 1:0.7 or 1:1 coupler suits a large number of applications.

Features:

- Wavelengths: 630 to 1600nm
- Power Level: 1W to 50W
- Coupling 1:0.7 or 1:1
- Efficiency typically better 80%
- SMA 905 -> SMA 905

Benefits:

- Nickel-plated Connector Surfaces
- Small Foot Print; easy to mount
- Robust Design
- OEM Quantity

Applications:

- Fiber exchangeability or Fiber extension in:
- Medical System
 - Material Processing
 - Pumping
 - Illumination

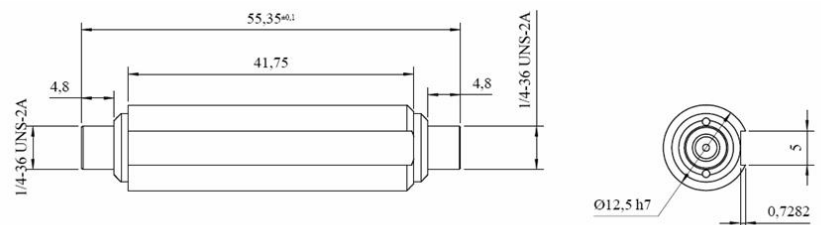
Examples for coupled Fibers:

- 1:1 Coupler
 - 200µm, NA 0.22 into 200µm, NA 0.22
 - 400µm, NA 0.22 into 400µm, NA 0.22
- 1:0.7 Coupler
 - 250µm, NA 0.15 into 200µm, NA 0.22
 - 500µm, NA 0.15 into 400µm, NA 0.22

Module Drawing (Dimensions in mm)

Example: Special 1:0.7 Coupler

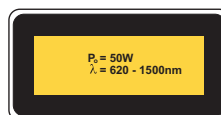
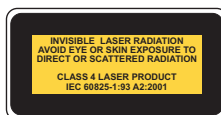
Drawing may be modified depending on specifications.



Versions:

- LU1600A050
< 50W (SMA 905)

User Safety



Your ideas are welcome.